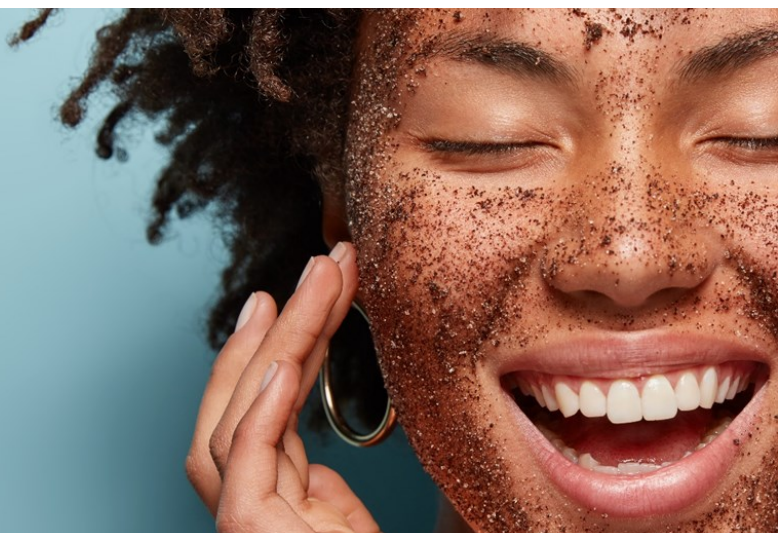


Double exfoliating mask



Glow skin kit—LSIN 8109



Ingredients	Phase	%
SUPREME (Polyglyceryl-3 Rice Branate, Cetearyl Alcohol, Sucrose Stearate)	A	6.00
Glyceryl Stearate SE		2.00
Caprylic/Capric Triglyceride		5.00
Coco-Caprylate		4.00
Limnanthes Alba Seed Oil		1.00
Rosmarinus Officinalis Extract, Canola Oil		0.05
Tocopheryl Acetate		0.15
Aqua	B	to 100
Glycerin		5.00
Sodium Benzoate		0.40
Sodium Dehydroacetate		0.25
Cellulose Gum	B'	1.00
Xanthan Gum		0.50
Kaolin	C	7.00
Tapioca	D	2.00
LENIPHENOL® (Pinus Radiata Bark Extract)	E	1.00
Potassium Sorbate	F	0.30
Aqua		2.50
RED ALGA GEL EC (Ahnfeltiopsis Concinna Extract)	G	5.00
TREALIX® (Trehalose, Hydrolyzed Vegetable Protein)	H	2.00
LAUROAT EC (Sodium Lauroyl Oat Amino Acids)	I	2.00
VEROCHIC® (Shikimic acid)	L	1.00
Aqua		5.00
Olive Kernel Powder	M	2.00
Benzyl Alcohol	N	0.40
Parfum	O	0.50

Characteristics

Aspect	Consistent emulsion
Color	Beige
Odor	Characteristics
pH	4.5 —5.0
Brookfield Viscosity S6 RPM 20	15000—25000 mPa*s

Method

Heat phase A to 70°C. Heat phase B to 70°C, stirring B' until complete dispersion. Add A to B. When the emulsion is completed, add under fast stirring C and D at 70°C. Cool down below 50°C and add E under fast stirring. Cool down and add the remaining phases.