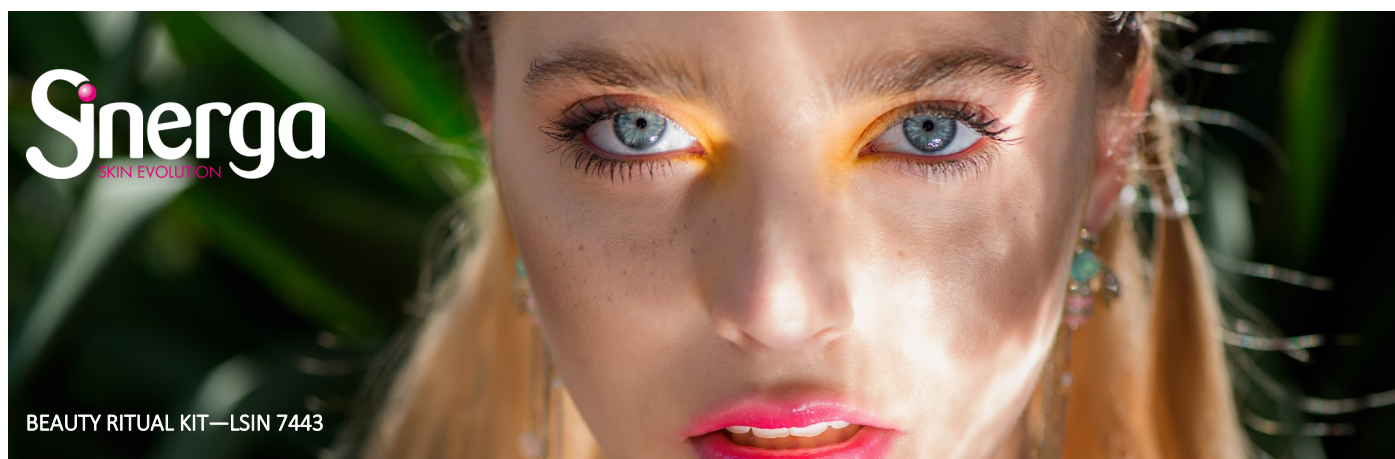


Perfect skin serum

With an **extremely light** and easily absorbable texture, this serum is the best ally for an even and glowing complexion. It is indicated for all skin types, even young ones, to enhance the skin barrier function, preventing dehydration and keeping the skin plumped. It also counteracts hyperpigmentation, evening out complexion and fostering a bright appearance, for a **positively dew-saturated skin**.



Ingredients	Phase	%
Aqua	A	To 100
Disodium EDTA		0.10
Panthenol Glycerin		1.00
Carbomer	A'	0.30
Acrylates/C10-30 Alkyl Acrylate Crosspolymer		0.25
PHYTOCREAM® 2000 (Potassium Palmitoyl Hydrolyzed Wheat Protein, Glyceryl Stearate, Cetearyl Alcohol)	B	2.00
Coco-Caprylate/Caprato		4.00
C12-15 Alkyl Benzoate		2.00
Caprylic/Capric Triglyceride		2.00
AZELOGLICINA® (Potassium Azeloyl Diglycinate)	C	2.00
1,2-Hexanediol (and) Caprylyl Glycol		1.00
Aqua		5.00
Sodium Hyaluronate		2.00
RED ALGA GEL® (Ahnfeltiopsis Concinna Extract)		4,00
Parfum		qb
Sodium Hydroxide	D	qb

Characteristics	
Aspect	Semiconsistent emulsion
Color	White
Odor	Characteristics
pH	5.8 – 6.2
Brookfield Viscosity S5 RPM 10	21'280 mPa*s

Method

Heat phase A at 65° C. Disperse A' components under fast stirring. Add phase B pre-heated at 65° C, stirring until it forms a homogeneous system. Cool down at 30° C and add the other components. Add D until the desired pH.