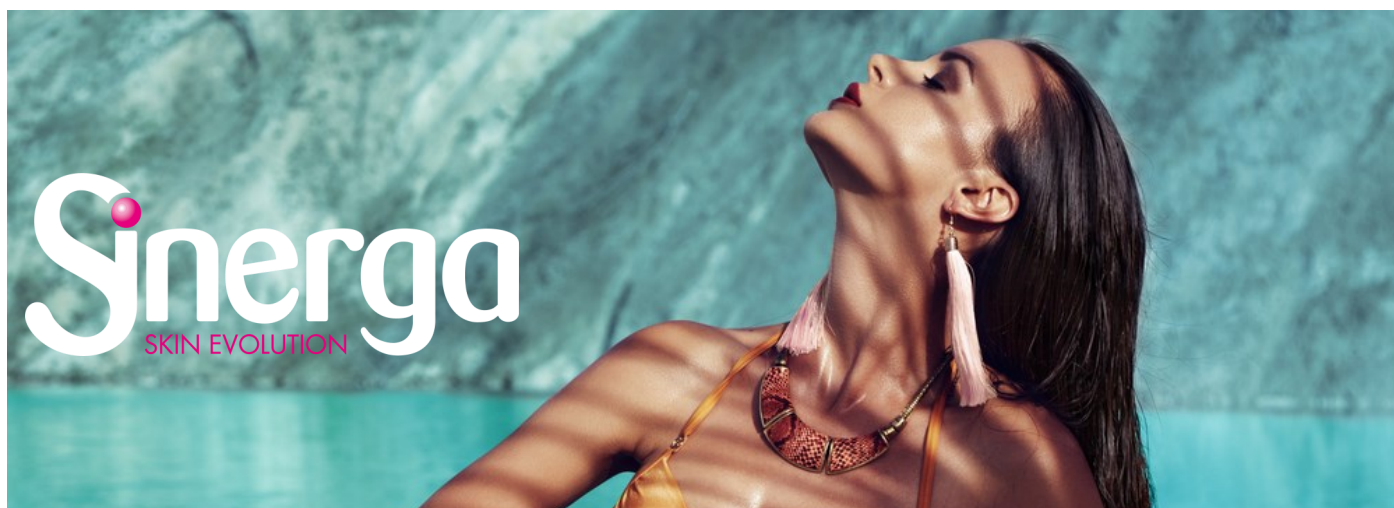


WATERLOVER SUN PROTECTION SPF 30



The **impact** of sun care products is more and more under the radar, especially when it comes to the consequences of their usage for the **marine environment**. Yet, at the same time, we have never been more aware of the **importance to protect our skin from UV rays** to prevent cellular damages, premature photo-aging, and more serious pathologies.

This sunscreen conjugates protection from sun's damages with **safe, not harmful ingredients** and a very **pleasant texture**:

its **natural emulsifier Supreme** confers a light texture easy to spread and with no sticky residues, even in the presence of a high percentage of physical filter (with a completely natural cover), which usually weight the feeling of the cream during application. The star ingredient is the innovative natural blend **Natirheo** that act as a **rheological modifier**, completely replacing the synthetic counterparts that end up in the environment and are questioned, as microplastics, for their long-term effects, both for nature and even for our own health (through food-chain contamination). It is also enriched with a highly **soothing natural extract, Leniphenol®**, able to inhibit UV-induced irritation and ROS, as well as with a hydrating agent to prevent dryness and desquamation.

Ingredients	Phase	%
Aqua	A	To 100
Glycerin		3.00
Hydroxyacetophenone		0.70
NATIRHEO (Ceratonia Siliqua Gum, Sclerotium gum)	A'	1.00
SUPREME (Polyglyceryl-3 Rice Branate, Cetearyl Alcohol, Sucrose Stearate)	B	5.00
Hydrolyzed Jojoba Esters (and) Water		2.50
Coco-Caprylate/Caprate, Zinc Oxide, Polyhydroxystearic Acid		25.00
Coconut Alkanes (and) Coco-Caprylate/Caprate		3.00
Dicaprylyl Ether		3.00
Tocopherol Acetate		0.10
LENIPHENOL® (Pinus Radiata Bark Extract)	C	0.20
MANDORLAT (Prunus amygdalus dulcis Oil, Hydrolyzed Sweet Almond Protein, Potassium Palmitoyl Hydrolyzed Wheat Protein)		1.00
TREALIX® (Trehalose, Hydrolyzed Vegetable Protein)		1.00
FENIOL (Phenethyl Alcohol, Caprylyl Glycol)	D	0.50
Parfum		qb

Aspect:	Consistent emulsion
Color:	White
Odor:	Characteristic
pH:	7.0 – 8.0
Brookfield Viscosity SP6 RPM 10	50000- 120000 mPa.s

Method

Heat A at 70°C, dispersing A' under mixing.
Heat phase B at 70°, then add B to A under mixing until the emulsion takes place.
Cool down to 30°C under mixing and add C-D below 40°C.